

# LEGEND

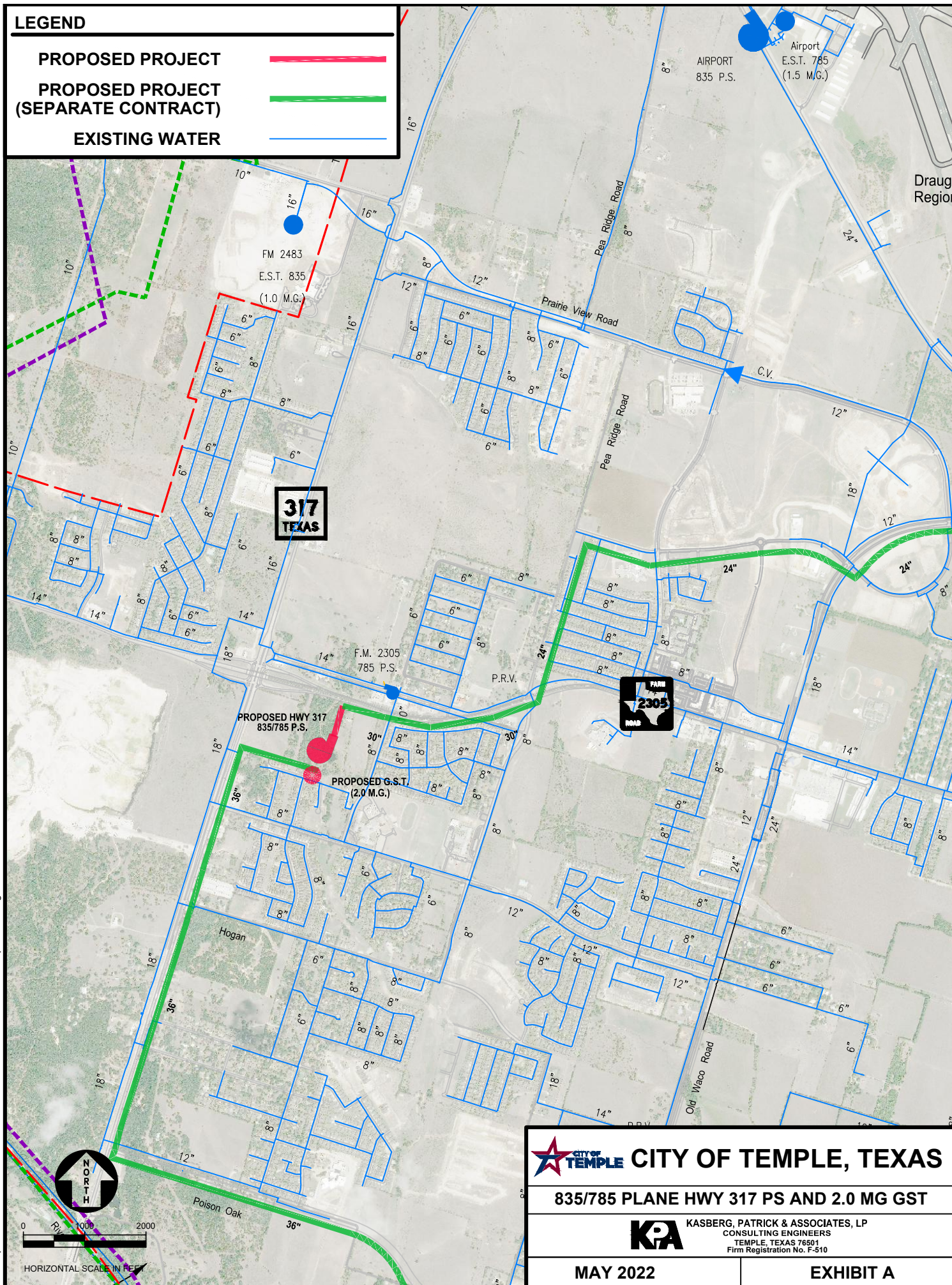
PROPOSED PROJECT



PROPOSED PROJECT  
(SEPARATE CONTRACT)



EXISTING WATER



**CITY OF TEMPLE, TEXAS**

**835/785 PLANE HWY 317 PS AND 2.0 MG GST**



**KASBERG, PATRICK & ASSOCIATES, LP**  
CONSULTING ENGINEERS  
TEMPLE, TEXAS 76701  
Firm Registration No. F-510

**MAY 2022**

**EXHIBIT A**