

E3 Storage Temple  
By Texas Car Clubs, LLC  
3404 S Kegley Road, Temple, TX 76502



Fig. 1. Satellite view from Google Maps showing some storage of vehicles previously stored there and the impound lot to the North. Across the street is InHouse Systems and their vehicles.

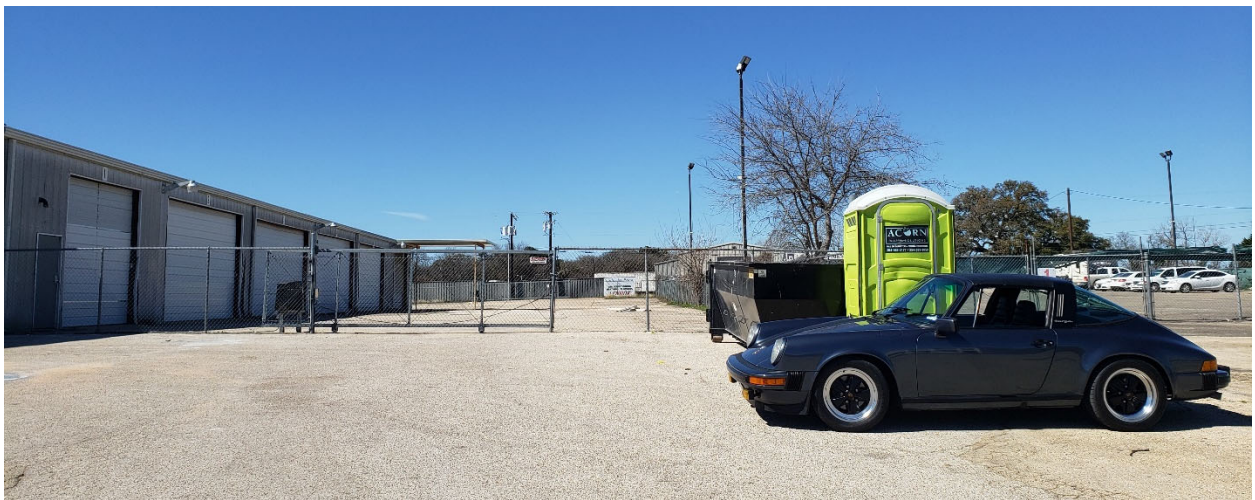


Fig. 2. Date- 23 Feb 2024. View from Kegley Road looking West.





Fig. 3. Date- 23 Feb 2024. View from Kegley Road looking West. Kegley Road is below the parking lot site and therefore the angle of view helps to obscure vehicles and trailers behind a covered fence.



Fig. 4. Date- 23 Feb 2024. View from Kegley Road looking West.



Fig. 5. Date- 23 February 2024. View from Kegley Road looking Northwest towards impound lot.



Fig. 6. Date- 23 February 2024. View from Kegley Road closer in. Note green fabric on impound lot.





Fig. 7. Date- 23 February 2024. Impound Lot just north of desired building. Of note is the fabric used to provide shielding.



Fig. 8. Example of open-air trailer used for transporting vehicles. For comparison, FedEx vehicles' height range from 7' to 10' overall height and semi-truck trailers are 13' tall and are much taller than these trailers.



Fig. 9. Example of an enclosed trailer for taking vehicles to events. These trailers are regularly 6'11" which is still under the height of a typical FedEx truck and significantly lower than semi-truck trailers of 13' which have been stored on site. See [www.trailex.com](http://www.trailex.com) for example enclosed trailers.



Fig. 10. Interior of e3 Storage Marietta facility. Exteriors are usually not publicized or promoted to discourage theft. This goes to the extent that Google Maps is requested not to have the facility on their maps along with pictures to preserve the club members' privacy.