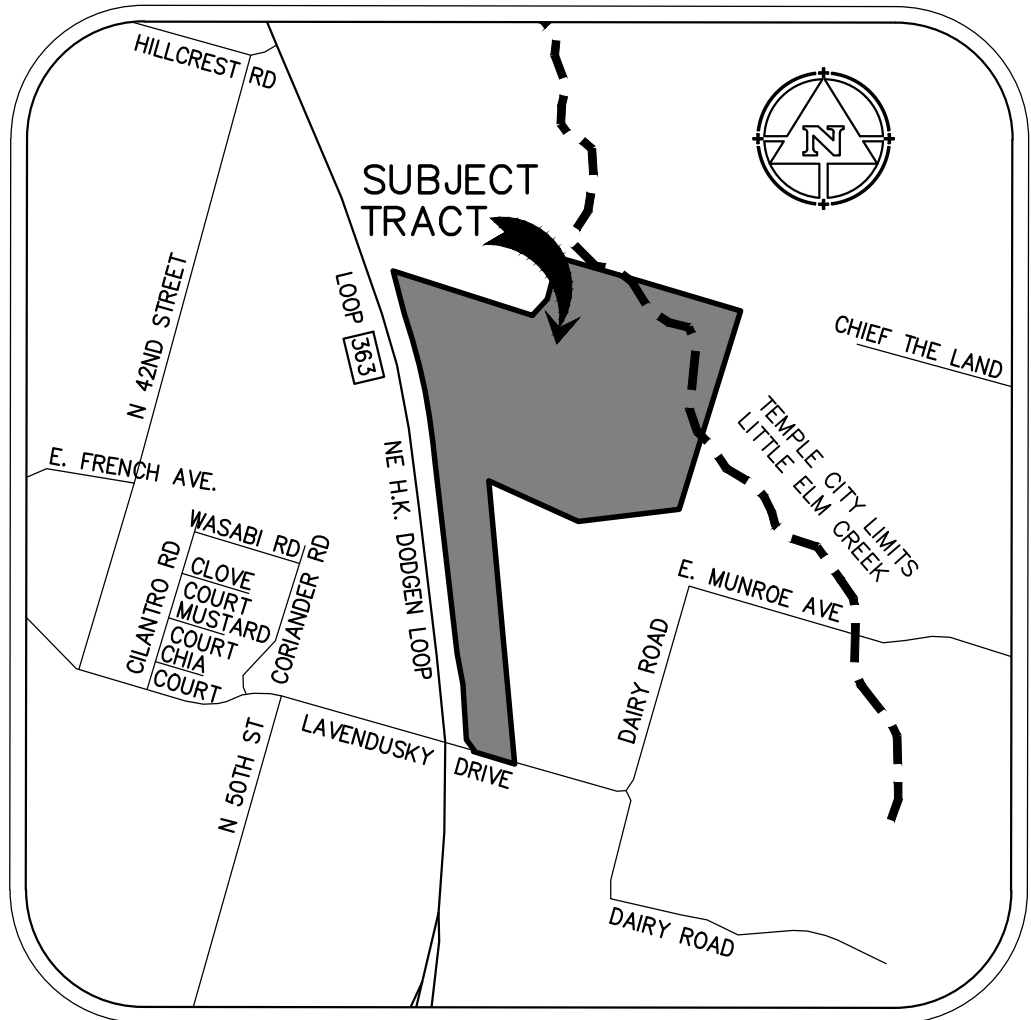
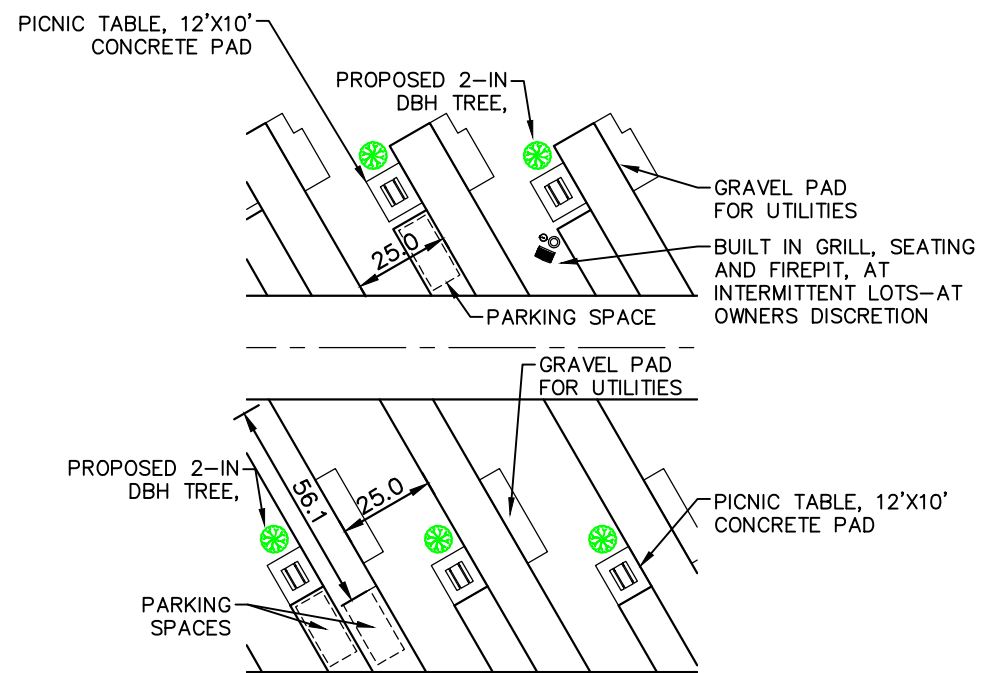


INSET A - CONNECTION TO N.E. HK DODGEN LOOP
SCALE: 1"=200'



VICINITY MAP



INSET B - TYP. RV PAD DETAIL
SCALE: 1"=20'

AMENITIES AREA TABLE
MINIMUM OF 8% FOR OPEN SPACE AND RECREATIONAL FACILITIES
PHASE 1 + PHASE 2 ACREAGE = 18.13+10.93 = 29.06 TOTAL ACRES.
8% OF TOTAL ACREAGE = 29.06*(.08) = 2.32 ACRES REQUIRED

LAND USE DESCRIPTION	AREA (AC.)
CENTRALIZED AMENITY CENTER WITH POOL, PLAYGROUND, TRAIL, PAVILION	1.15
DOG PARK / OPEN SPACE	0.71
WALKING TRAIL / OPEN SPACE AT NORTHERN BOUNDARY LINE	0.47
TOTAL	2.33

NOTES:
1. CLUBHOUSE WILL HAVE 150 S.F. OFFICE SPACE, 15 MALE AND FEMALE BATHROOMS/SHOWERS AND 15 WASHER/DRYER UNITS.

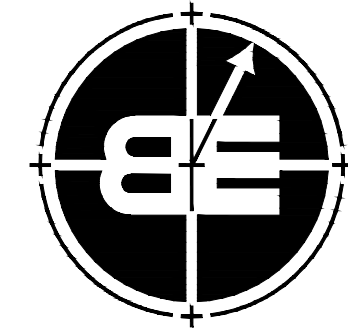


CONCEPT PLAN FOR:
LOOP 363 RV PARK - 150 PADS

16801 N.E. HK DODGEN LOOP
M. MORENA SURVEY, ABSTRACT #14, BELL COUNTY, TEXAS
CITY OF TEMPLE, BELL COUNTY, TEXAS



REVISIONS
07/05/24-COMMENTS



FIRM # F-13392

**BELTON
ENGINEERING
INC.**

106 NO. EAST STREET
BELTON, TEXAS 76513
OFFICE (254)731-5600
MOBILE (254)289-7273
BELTONENGINEERS.COM

*Engineering
Design/Build
Planning*

CONCEPT PLAN OF:
LOOP 363 RV PARK - 150 PADS
16801 N.E. HK DODGEN LOOP
CITY OF TEMPLE, BELL COUNTY, TEXAS, 76501

SCALE: 1"=60'

DRAWN.: RR

ELEC. DRAWING FILE

C:\2400X-CONCEPT.DWG

DATE: 07/05/24

JOB NO.: 2400X

01 OF 01

C1.0