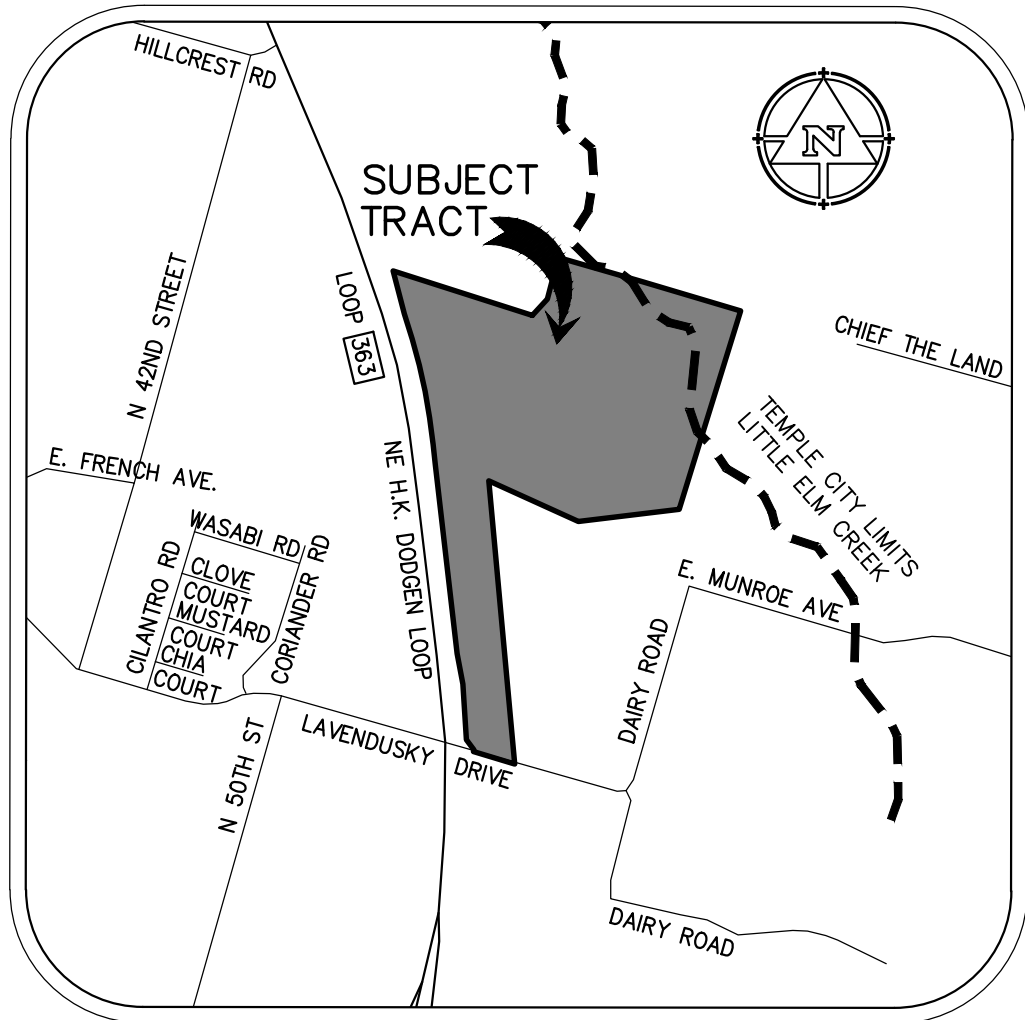
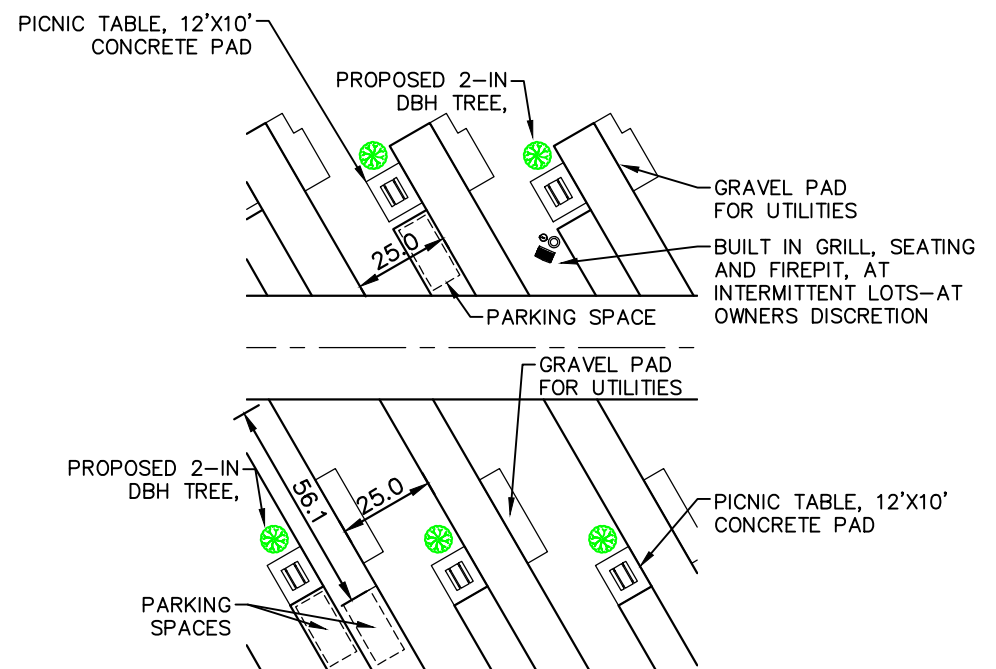


INSET A - CONNECTION TO N.E. HK DODGEN LOOP  
SCALE: 1"=200'



VICINITY MAP



INSET B - TYP. RV PAD DETAIL  
SCALE: 1"=20'

AMENITIES AREA TABLE  
MINIMUM OF 8% FOR OPEN SPACE AND RECREATIONAL FACILITIES  
PHASE 1 + PHASE 2 ACREAGE = 18.13+10.93 = 29.06 TOTAL ACRES.  
8% OF TOTAL ACREAGE = 29.06\*(.08) = 2.32 ACRES REQUIRED

LAND USE DESCRIPTION	AREA (AC.)
CENTRALIZED AMENITY CENTER WITH POOL, PLAYGROUND, TRAIL, PAVILION	1.15
DOG PARK / OPEN SPACE	0.71
WALKING TRAIL / OPEN SPACE AT NORTHERN BOUNDARY LINE	0.47
TOTAL	2.33

NOTES:  
1. CLUBHOUSE WILL HAVE 150 S.F. OFFICE SPACE, 15 MALE AND FEMALE BATHROOMS/SHOWERS AND 15 WASHER/DRYER UNITS.

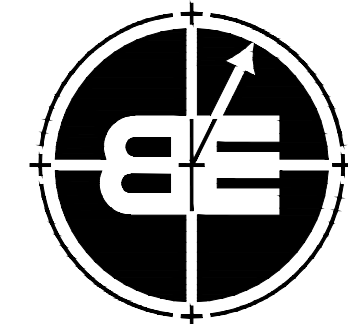


CONCEPT PLAN FOR:  
**LOOP 363 RV PARK - 150 PADS**

16801 N.E. HK DODGEN LOOP  
M. MORENA SURVEY, ABSTRACT #14, BELL COUNTY, TEXAS  
CITY OF TEMPLE, BELL COUNTY, TEXAS



REVISIONS  
07/05/24-COMMENTS  
07/23/24-ENTRANCE



FIRM # F-13392

**BELTON  
ENGINEERING  
INC.**

106 NO. EAST STREET  
BELTON, TEXAS 76513  
OFFICE (254)731-5600  
MOBILE (254)289-7273  
BELTONENGINEERS.COM

*Engineering  
Design/Build  
Planning*

CONCEPT PLAN OF:  
**LOOP 363 RV PARK - 150 PADS**  
16801 N.E. HK DODGEN LOOP  
CITY OF TEMPLE, BELL COUNTY, TEXAS, 76501

SCALE: 1"=60'

DRAWN.: RR

ELEC. DRAWING FILE

C:\2400X-CONCEPT.DWG

DATE: 07/23/24

JOB NO.: 2400X

01 OF 01

C1.0